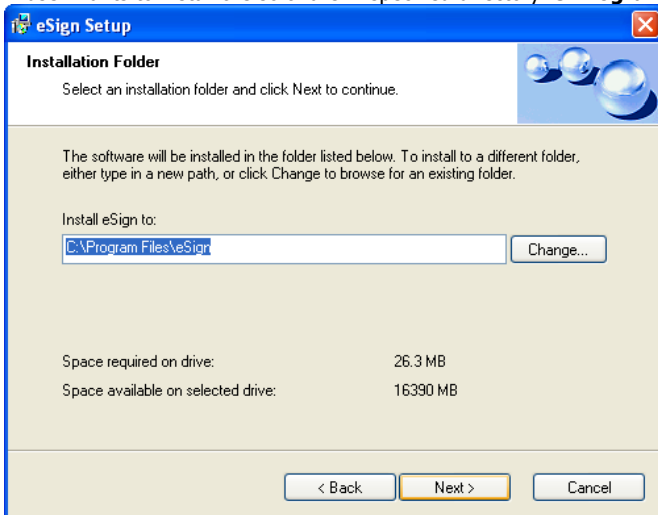


**Installation**

- Step 1 : Insert the CD containing the software "eSign" into CD-ROM drive.
- Step 2 : "Welcome" dialog box appears. Press **Next>** to continue and proceed with **Step 3**.  
OR If "Welcome" dialog box does not appear then perform **Step 2A**.

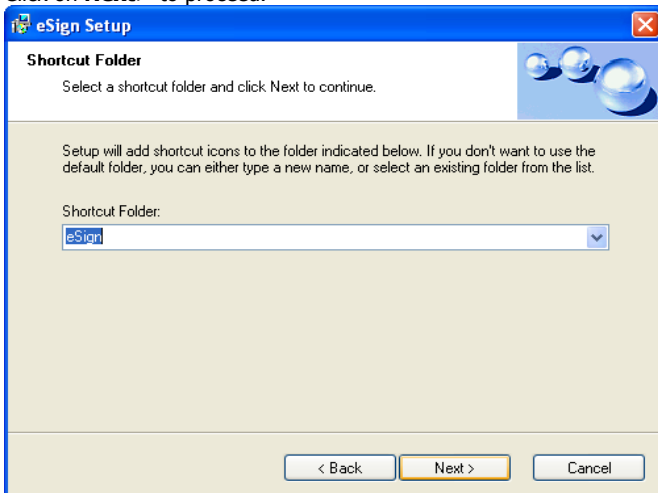


- Step 2A: Select the CD-ROM drive from Windows Explorer or My Computer. User will be able to see eSignSetup.exe file of this software. Run the eSignSetup.exe file by double clicking on it from CD. "Welcome" dialog box appears. Press **Next>** to continue.
- Step 3 : **Installation Folder** dialog box appears.  
If user wants to install the software in specified directory 'C:\Program Files\eSign'. Click on **Next>** button to continue installation.

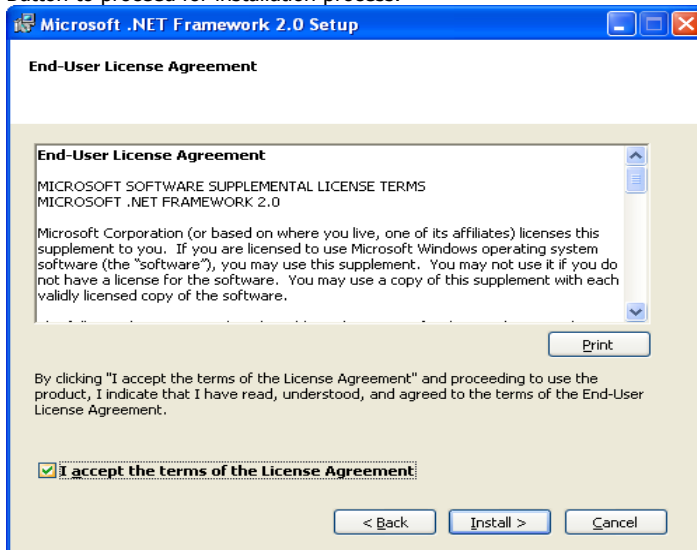


OR If user wants to install the software in different destination directory other than the Specified Click on the Change button and select the desired destination and then click on **Next>** button.

- Step 4 : Click on **Next>** to proceed.



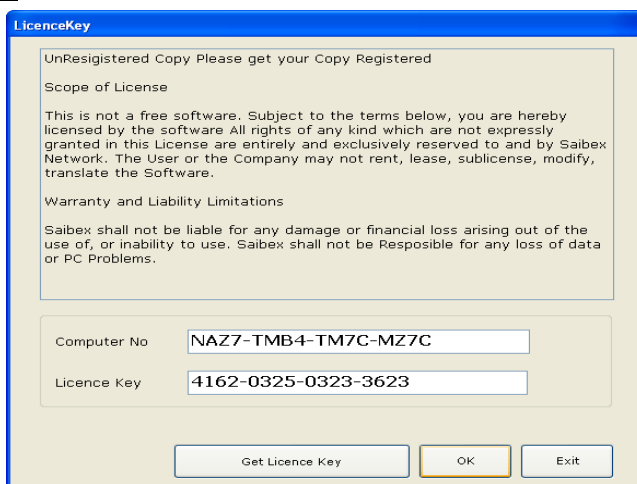
- Step 5 : Click on **Next>** to proceed.
- Step 6 : "Welcome" dialog box for Microsoft .NET Framework 2.0 appears. Click "**Next>**" to continue.
- Step 7 : "**End-User License Agreement**" dialog box appears. Click on "**I accept the terms of the License Agreement**" and click on **Install>**.  
Button to proceed for installation process.



- Step 8 : Click on **Finish** button.
- Step 9 : Now **eSign Software Installed Successfully** dialog box appears. Click on **Finish** button.



**License Key**

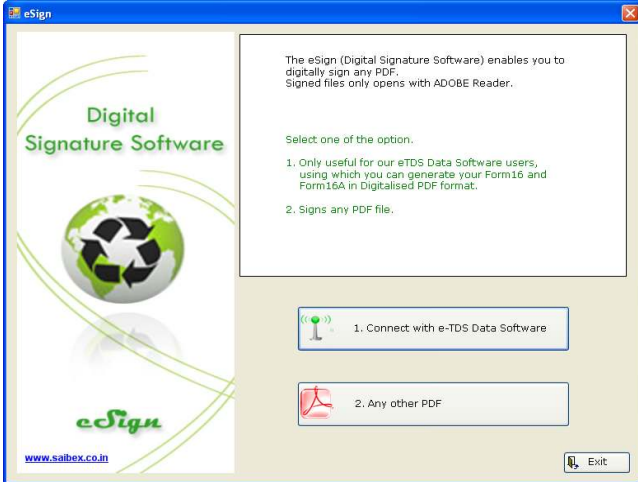


Please register with Saibex Network and submit "Computer No",

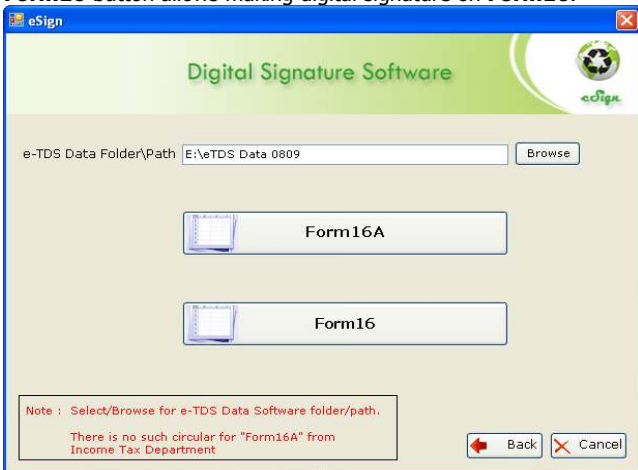
**STARTING UP WITH eSign**



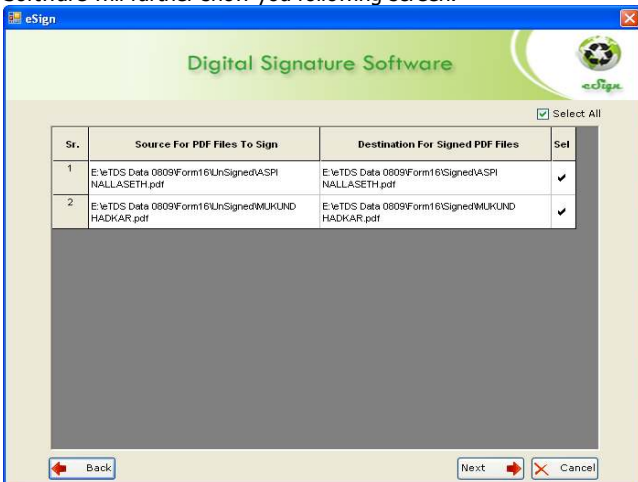
1. Execute the eSign Software for eSign.exe file. You can do this by double-clicking on the file. The initial selection window opens.
2. From following screen shown below, you can select required option.  
Connect with e-TDS Data Software (allows you to digitally sign Form 16 created in e-TDS Data)  
Any other PDF (allows you to digitally sign any other PDF file)



3. If you select "Connect with e-TDS Data Software", Form 16 PDF file can be digitally signed. And following screen will be shown. Select e-TDS Data Software folder\path where it is located on your computer. **Form16** button allows making digital signature on **Form16**.



4. Software will further show you following screen.



Form16 folder will be auto created in your eTDS Data Software folder. The entire Form16 file in Unsinged folder will be selected. There is a facility to unselect unwanted files, just double left click in **Sel** column for particular record. And Click **Next** to continue.

Add Signature Details, Signature Setting, Page Number and Placement. Click on "Sign Signature".

5. For any other PDF file same process to be carried out as mentioned above.

H.O.: C-3, Satyander Bhuvan, New Nagardas Road, Andheri (East), Mumbai – 400 069  
 Tel.: (022) 2825 8159 / 2826 1255 Email : [saibexonline@rediffmail.com](mailto:saibexonline@rediffmail.com)  
 Branch: Surat, Ahmedabad